



SUITE GL180 | EXECUTIVE OFFICE

SUITE FEATURES

- \$1,100.00 per month full-service gross.
- Two private full-panel glass windowed offices.
- Exterior access directly from parking lot.
- Shared break area, restroom facilities, and I.T. closet.

PROPERTY FEATURES

- ~4:1000 parking ratio.
- Freshly renovated common areas.
- Highly desirable location at the epicenter of two major developments (over \$1B each):
 - The Exchange.
 - North Hills Innovation District.
- Convenient location:
 - 0.3 miles from I-440 highway.
 - 0.2 miles from Duke Raleigh Hospital.
 - 0.5 miles from Midtown East.
 - 1.2 miles from North Hills Shopping Center.



CONTACT US TODAY

CALL US AT
(919) 828-9999

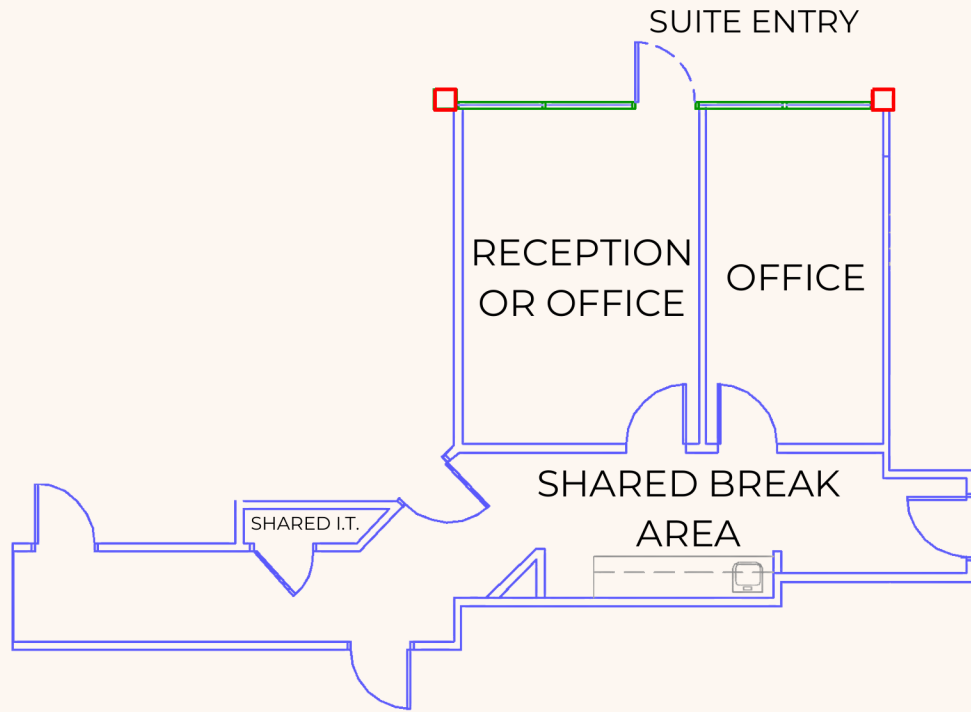
VISIT US AT
HobbsProperties.com

BROKERAGE • LEASING
PROPERTY MANAGEMENT
CONSTRUCTION • DEVELOPMENT

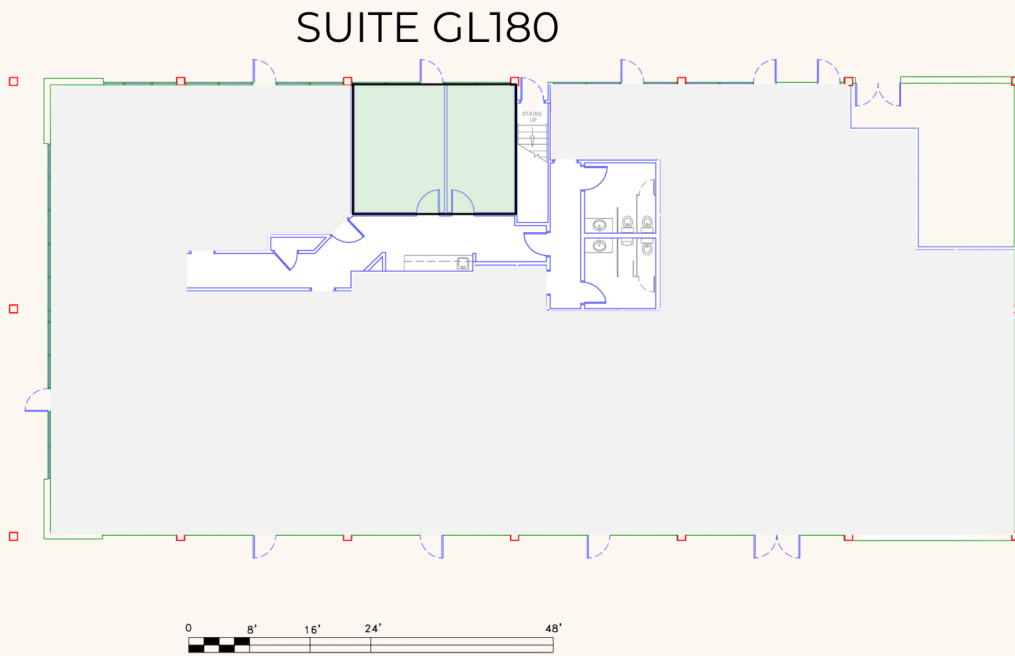


FLOORPLANS

SUITE OUTLINE



FLOOR PLATE



CONTACT US TODAY

CALL US AT
(919) 828-9999

VISIT US AT
HobbsProperties.com

BROKERAGE • LEASING
PROPERTY MANAGEMENT
CONSTRUCTION • DEVELOPMENT

